

filterEX

1. General Description:

The filterEX (09FEX1) is used for gaseous stream, not for liquids

2. Characteristics:

The use of the filterEX on batteries prevents:

- a flash-back of Hydrogen fire
- followed by a chain reaction between the battery cells

3. Requirements:

Normally, the filterEX is used in combination with the central degassing bfs plug (A51210), where all cells are inter-connected through the degassing hoses in addition to the normal water hoses.

FilterEX will protect the battery under any of the following circumstances:

- An ignition from an external source – flame propagation can be avoided by filterEX - mounted at the end of the degassing hose (see drawing no. 1)
- An ignition source inside one of the battery cells - a propagation of the flame can be prevented by filterEX mounted after each plug (see drawing no. 2)

4. Handling:

- The piping should be installed in such way that there are not more than 10 bfs plugs connected to one filterEX (see drawing no. 1).
- The filterEX should be replaced after approximately 600 cycles. Replacement frequency depends on the gas discharge volume per battery cells.

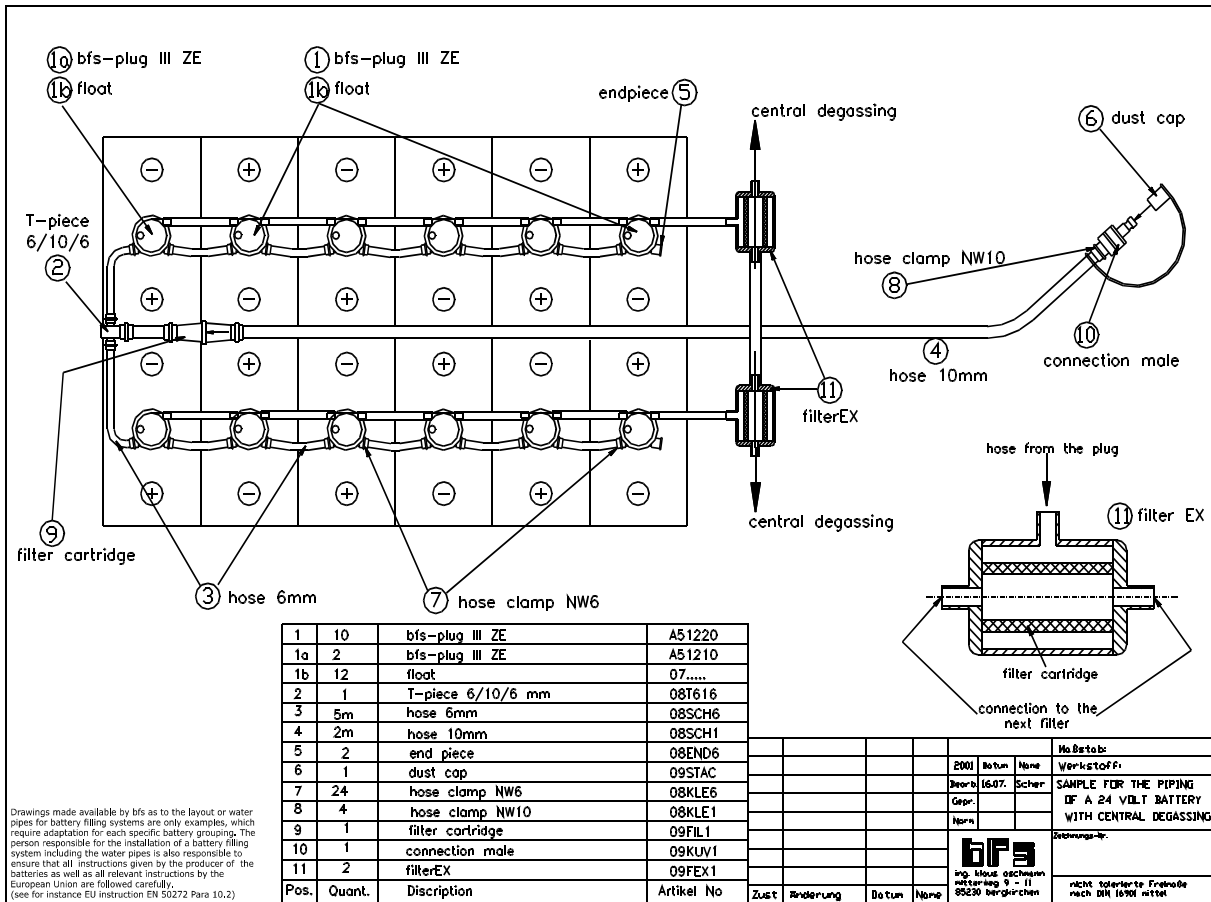
5. Technical Data:

All parts of the filterEX are made of polypropylene or polyethylene and are resistant to battery electrolyte. Porosity of the new filterEX insert: 60 to 110 µm

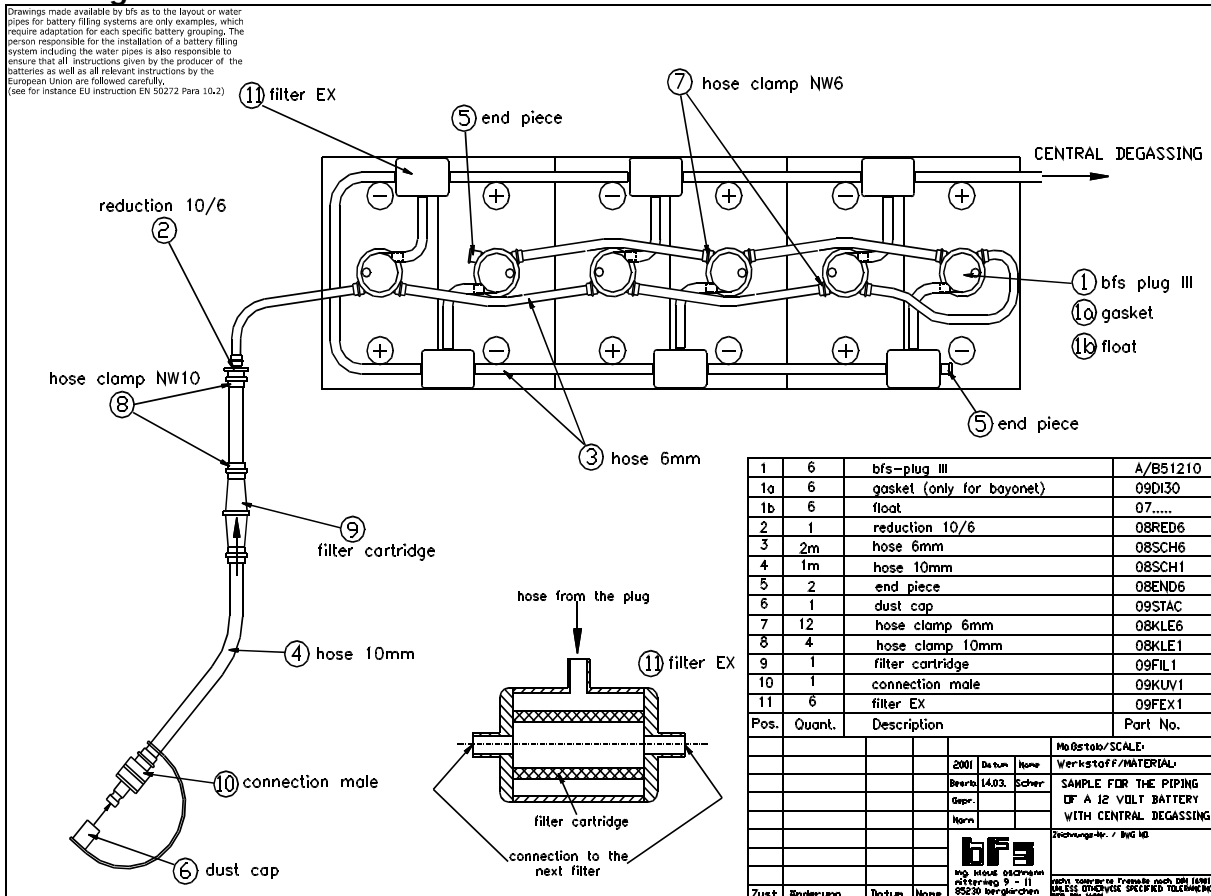
Technical Information



batterie füllungs systeme gmbh
ing. klaus oschmann



drawing 1



drawing 2