

filterEX

1. General Description:

The filterEX (09FEX1) is used for gaseous stream, not for liquids

2. Characteristics:

The use of the filterEX on batteries prevents:

- a flash-back of Hydrogen fire
- followed by a chain reaction between the battery cells

3. Requirements:

Normally, the filterEX is used in combination with the central degassing bfs plug (A51210), where all cells are inter-connected through the degassing hoses in addition to the normal water hoses.

FilterEX will protect the battery under any of the following circumstances:

- An ignition from an external source – flame propagation can be avoided by filterEX - mounted at the end of the degassing hose (see drawing no. 1)
- An ignition source inside one of the battery cells - a propagation of the flame can be prevented by filterEX mounted after each plug (see drawing no. 2)

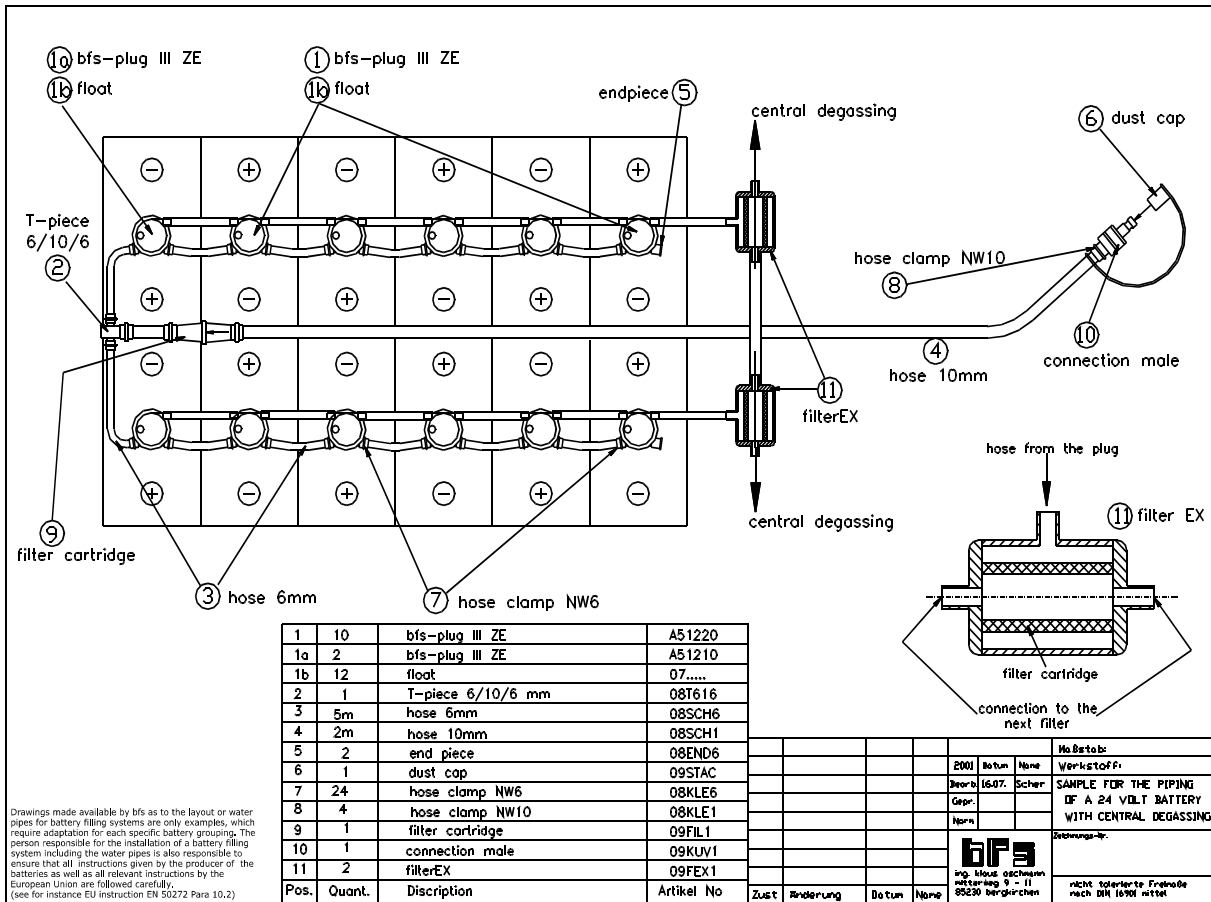
4. Handling:

- The piping should be installed in such way that there are not more than 10 bfs plugs connected to one filterEX (see drawing no. 1).
- The filterEX should be replaced after approximately 300 cycles, respectively when the white insert becomes discoloured. Replacement frequency depends on the gas discharge volume per battery cells.

5. Technical Data:

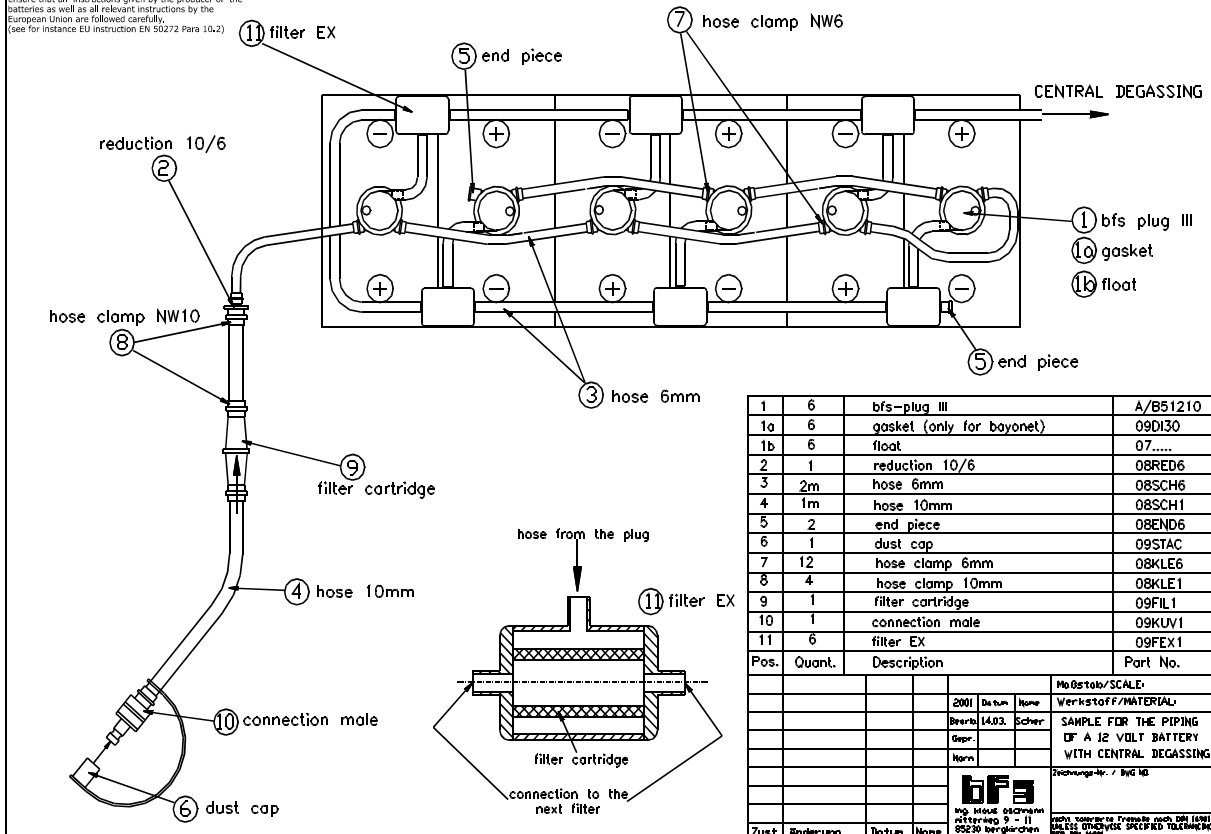
All parts of the filterEX are made of polypropylene or polyethylene and are resistant to battery electrolyte. Porosity of the new filterEX insert: 60 to 110 µm

Technical Information



drawing 1

Drawings made available by bfs as to the layout or water pipes for battery filling systems are only examples, which require adaptation for each specific battery grouping. The person responsible for the installation of a battery filling system including the water pipes is also responsible to ensure that all instructions given by the producer of the batteries as well as all relevant instructions by the European Union are followed carefully. (see for instance EU instruction EN 50272 Para 10.2)



drawing 2