

## filterEX

### 1. General Description:

The filterEX (09FEX1) is used for gaseous stream, not for liquids

### 2. Characteristics:

The use of the filterEX on batteries can prevent:

- a flash-back of Hydrogen fire
- a chain reaction between the battery cells

### 3. Requirements:

Normally, the filterEX is used in combination with the central degassing bfs plug (A51210), where all cells are inter-connected through the degassing hoses in addition to the normal water hoses.

FilterEX will protect the battery under any of the following circumstances:

- An ignition from an external source – flame propagation can be avoided by filterEX fitted at the end of the degassing hose (see drawing no. 1)
- An ignition source inside one of the battery cells - a propagation of the flame can be prevented by filterEX fitted after each plug (see drawing no. 2)

The filterEX insert should be replaced at least once a year, or when the white insert becomes discoloured. Replacement frequency will depend on quantity of the gas discharge of the battery cells.

### 4. How to Replace the Insert

To replace the insert, disconnect the hoses from the filterEX and then remove the black cap (bayonet connection) from the body of the filterEX.

**Attention:** When opening the filterEX, beware of electrolyte residue.

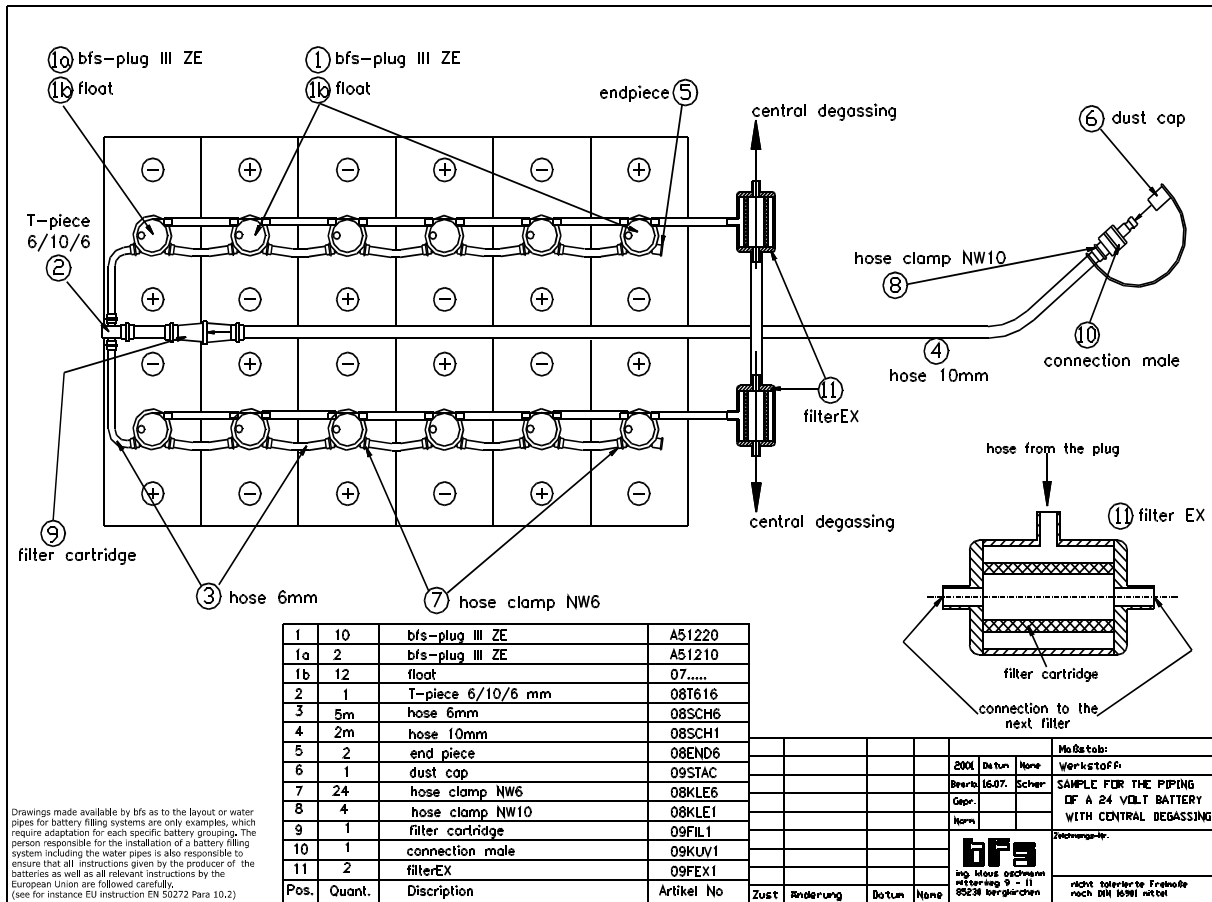
### 5. Technical Data:

All parts of the filterEX are made of polypropylene or polyethylene and are resistant to battery electrolyte. Porosity of the new filterEX insert: 60 to 110 µm

# Technical Information



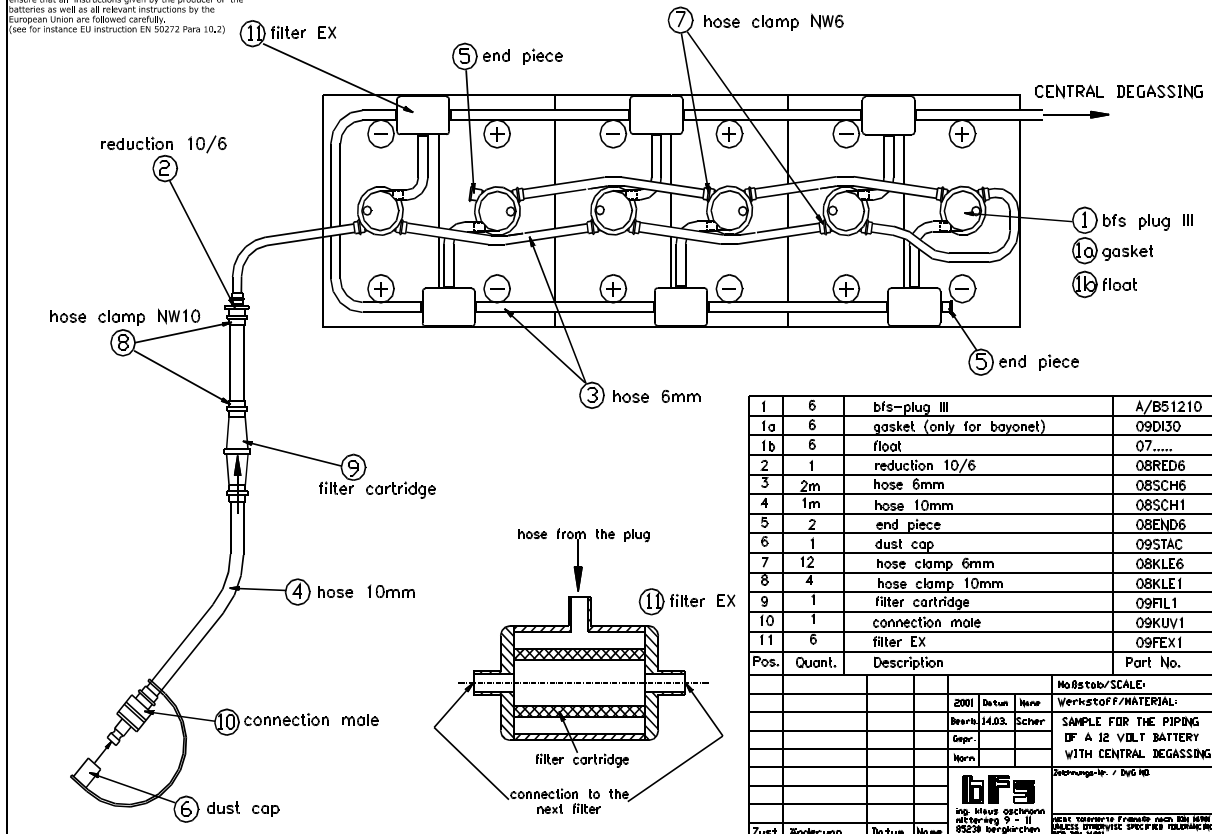
batterie füllungs systeme gmbh  
ing. klaus oschmann



Drawings made available by bfs as to the layout or water pipes for battery filling systems are only examples, which require adaptation for each specific battery grouping. The person responsible for the installation of a battery filling system including the water pipes is also responsible to ensure that all instructions given by the producer of the batteries as well as all relevant instructions by the European Union are followed carefully. (see for instance EU instruction EN 50272 Para 10.2)

## drawing 1

Drawings made available by bfs as to the layout or water pipes for battery filling systems are only examples, which require adaptation for each specific battery grouping. The person responsible for the installation of a battery filling system including the water pipes is also responsible to ensure that all instructions given by the producer of the batteries as well as all relevant instructions by the European Union are followed carefully. (see for instance EU instruction EN 50272 Para 10.2)



## drawing 2

2001 Datum Name Werkstoff/MATERIAL:  
Bereit: 14.03. Scher SAMPLE FOR THE PIPING  
Gepr.: OF A 12 VOLT BATTERY  
Norm: WITH CENTRAL DEGASSING  
Zeichnungs-Nr.: 7 DYC 02  
bfs ing. klaus oschmann nicht tolerierte Fremde nach DIN 9130  
11 UNLESS OTHERWISE SPECIFIED TOLERANCES PER DIN 9130  
85236 bergischen